

# assembly instructions

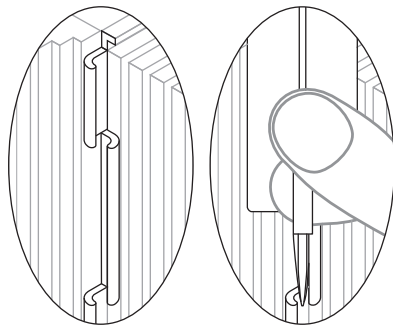
Components: 1 FRONT PANEL (with DOOR), 3 SIDE PANELS, 4 CONNECTOR STRIPS, 2 SHELVES, 1 TOP, 1 LID, 1 PULL-OUT-PANEL, 1 PUSH-PULL-TOOL

Last updated: 8 March 2021

**START HERE - it's easy**  
- follow these instructions

**1** Stand the **FRONT PANEL** on a flat, level surface (NB: see User Guide - Site Selection). Stand a **SIDE PANEL** at right-angles to the front panel.

**2** Pull the corner tabs together so they overlap. Slide the **CONNECTOR STRIP** between the overlapping tabs - pointed end down. Use the handle at the bottom of the connector to guide the tip.



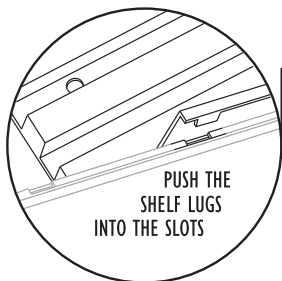
PULL CORNER TABS TOGETHER SO THEY OVERLAP

SLIDE CONNECTOR BETWEEN OVERLAPPING TABS

**3** Stand another **SIDE PANEL** at right-angles to the other side of the front panel. Repeat step 2.

**4** Fit a **SHELF** to the front and side panels at the lower position. NB: Ensure the shelf lugs at the front and near the corners are aligned with the slots in the front and side panels.

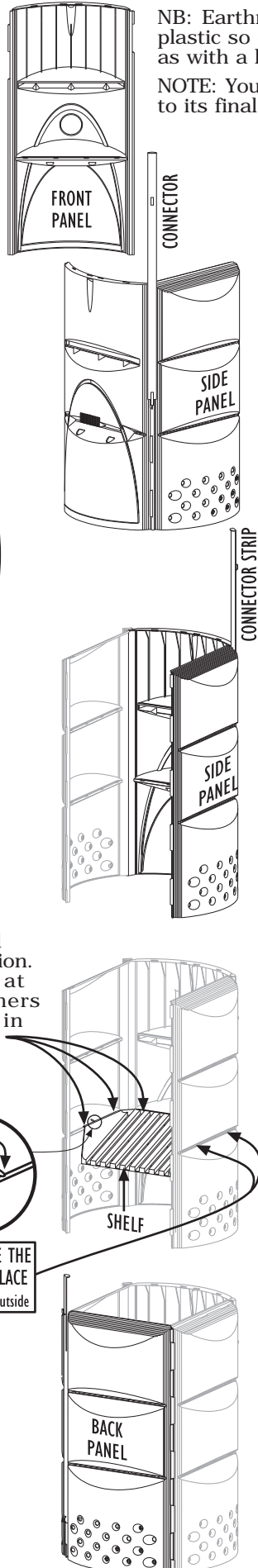
While inserting the lugs into the slots, snap the top edges under the stubs.



PUSH THE SHELF LUGS INTO THE SLOTS

NB: MAKE SURE THE LUGS ARE IN PLACE - check from the outside

**5** After the lower shelf is secure place the **BACK PANEL** between the two side panels - pull the tabs together and slide the connector strips between them as in step 2.



NB: Earthmaker components are made from plastic so do not use excessive force, such as with a hammer or pliers, during assembly.

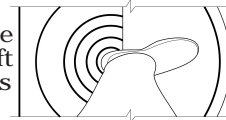
NOTE: Your Earthmaker can be carried to its final site after assembly.

**6** Fit the other **SHELF** to the back panel and the two side panels - insert the lugs into the slots and snap the top edges under the stubs. (See step 4.)

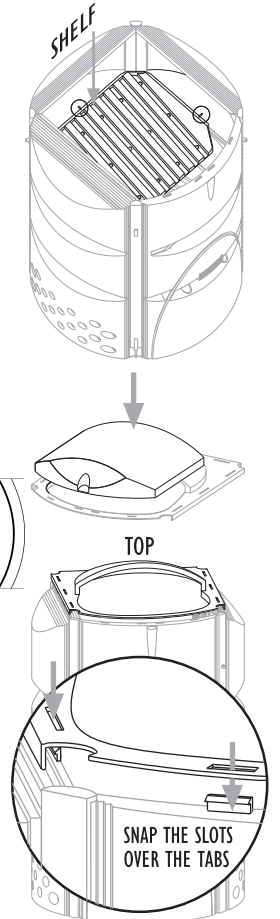
NOTE: This upper shelf slopes down from the back panel towards the front.

**7** Fit the **LID** to the **TOP** by pushing the spindle on the lid into the hole in the top.

Place the Lid and Top upside down on a soft surface. Press with a heel.



**8** Fit the **TOP PANEL**. Starting with the back and sides, snap the slots over the tabs. Support the side panels from the inside while pushing the top panel down to make a definite click. Snap the slots at the front over the tabs on the Front Panel while pushing the front panel out from the inside.



SNAP THE SLOTS OVER THE TABS

**9** Insert the **PULL-OUT PANEL** into the slot above the door. Place the **DOOR** in the front panel so that its bottom edge fits behind the rim.

**10** Position the Earthmaker, so that it is:

- conveniently positioned in relation to your kitchen
- on a flat, level, well drained surface (eg: paving slabs)
- shaded from hot sun
- suitably positioned for extracting mature compost.

CHECK that the top is properly in place after moving.

**11** Hang the **PUSH-PULL-TOOL** on a hook at the top of one of the connector strips.

Your Earthmaker is now ready for use - read the User Guide.

[www.earthmaker.co.nz](http://www.earthmaker.co.nz)

**IP Plastics**<sup>®</sup>

Experience | Enterprise | Excellence

Manufactured and distributed by:

IP Plastics Ltd, 80A Hunua Rd, Papakura, Auckland 2110, New Zealand  
P: +64 9 295 0510 F: +64 9 298 1048 E: sales@ipplastics.co.nz

